

GET STARTED

WELCOME TO BODY FURNACE®

Thank you for purchasing the Body Furnace with Bluetooth Wireless Technology. With app-enabled custom heat settings, Body Furnace represents the next generation of personal heating technology. Body Furnace uses patented reflective heat technology to direct heat to your core, allowing your body to maintain a stable temperature and keep your extremities warm.

Perfect for outdoor events, sporting and camping, Body Furnace is intended to be used in any cold setting and enables outdoor enthusiasts to enjoy their favorite activities in comfort. These operating instructions provide directions on how to properly use and maintain your new device.

We are confident your cold weather activities will be more comfortable and enjoyable than ever before.

Enjoy your purchase,
Brownmed

www.body-furnace.com

PACKAGE CONTENTS

- Body Furnace Heating Unit
- Universal Strap
- USB Wall Charger
- USB Cord
- Instruction Booklet

Things you need to know before using the Body Furnace.

- Maintaining a comfortable heat level is easy with the use of the Body Furnace personal app.
- Do not use directly on skin. Always wear Body Furnace over a thin insulating layer.
- For best results, turn Body Furnace on before going outdoors.
- Only use the charging unit included with the device.
- The Body Furnace is durable enough to carry without a protective case, just throw in with your gear and go.
- Once Body Furnace has been fully charged, it will provide up to 6 hours of constant heat on low. Ambient temperature and operating environment will affect overall run time.

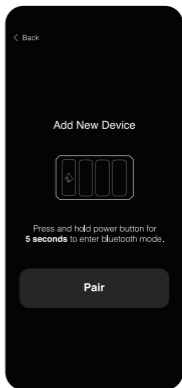
FIRST TIME POWER-ON APP MODE

Begin by downloading smart phone app and pairing the Body Furnace with your smart phone. Ensure the Body Furnace unit is ready for pairing by following the steps to power-on in manual mode.

BLUETOOTH ○●●●● ●○○●● ●●○○●

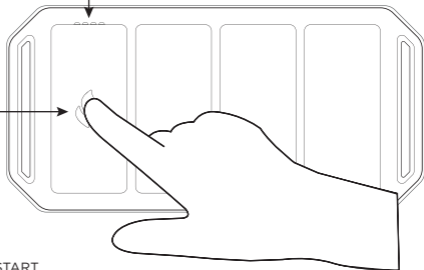
Hold 5 seconds while off.
Repeat until connected.

BLUETOOTH CONNECTED ○○○●



LED Indicator Lights

Control Button

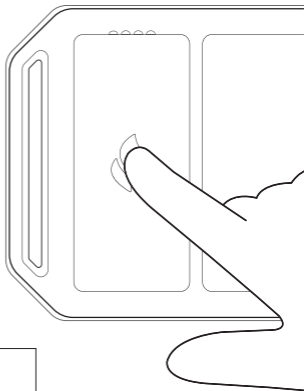


FIRST TIME POWER-ON MANUAL MODE

USING THE BODY FURNACE ON-UNIT CONTROLS

To operate the Body Furnace without the use of Bluetooth® technology, use the control button located on the front of the Body Furnace unit.

While the unit is off, press and hold the control button for 2 seconds until the blue light illuminates. Release the button and press again to cycle through 3 temperature modes.



OFF ●●●●

ON / NO HEAT ●●●●●

hold 2 seconds

Adjusting heat

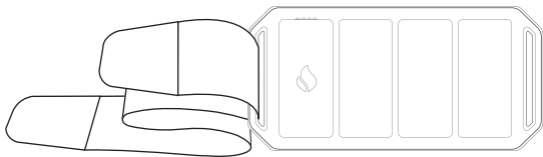
Low 100° F ○●●●

Med 120° F ●○●●

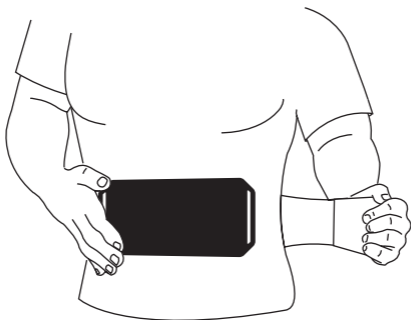
High 140° F ●●○●

USING UNIVERSAL STRAP

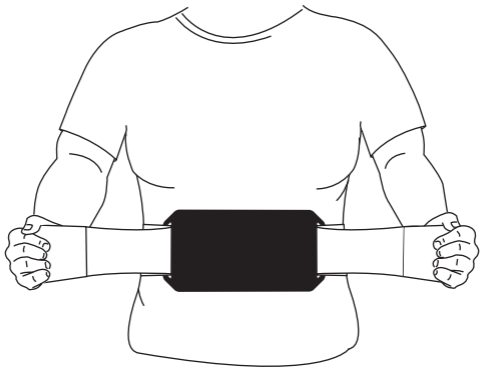
First, pull one end of strap through one loop on end of Body Furnace. Press gently to keep strap closed and in place.



Wrap the universal strap around back holding Body Furnace on your core.



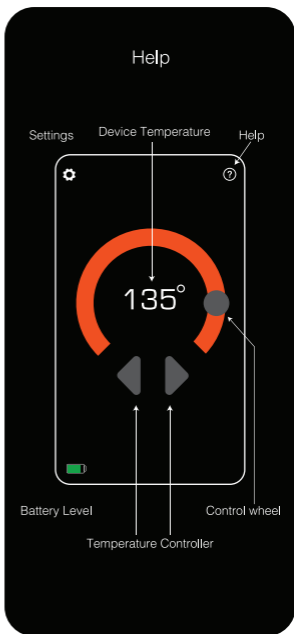
USING UNIVERSAL STRAP



Pull strap through second loop and adjust fit by pulling both strap ends outward then back until the strap fits comfortably. Press firmly on the hook and loop tabs to ensure a firm hold.

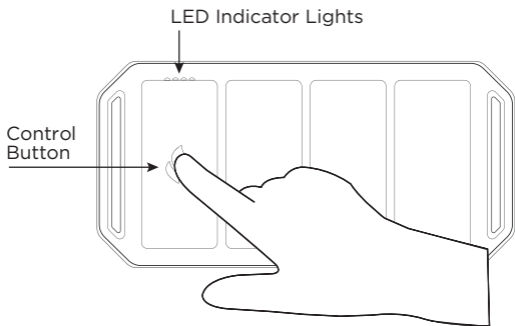
ADJUSTING HEAT - IN APP METHOD

Once your smart device is paired with the Body Furnace use the arrows or the control wheel to customize your heat settings.



ADJUSTING HEAT - ON-UNIT METHOD

While the unit is off, press and hold the control button for 2 seconds until the blue light illuminates. Release the button and press again to cycle through 3 temperature modes.

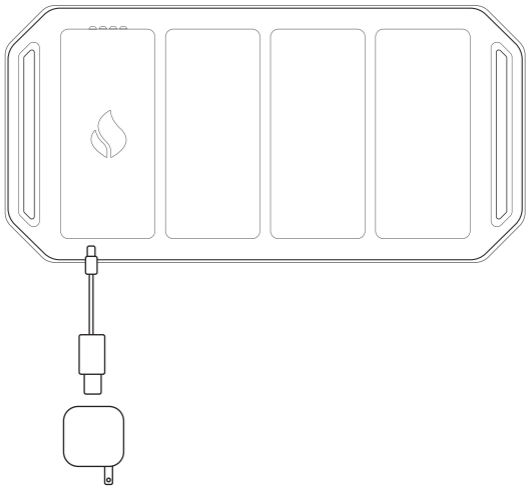


Adjusting heat

Low 100° F	○ ● ● ● ●
Med 120° F	● ○ ● ● ●
High 140° F	● ● ○ ● ●

RECHARGING AND STORAGE

Recharging is simple. Insert charge cable USB into charging adapter. Insert the other end of the charge cable into the charge port located under the logo on the front of the unit.



Store Body Furnace in its original packaging in a cool, dry place.

USING THE BODY FURNACE BLUETOOTH APPLICATION

To operate the Body Furnace with Bluetooth®, you will need to use the Body Furnace app. You can download this from the Apple App Store or the Google Play App Store. The app is compatible with these Apple® devices running iOS 9 or newer: iPhone® 5, iPod touch® 5th Gen., or newer versions of these devices. It is also compatible with leading Android™ devices.

Using the Bluetooth® feature

BEFORE YOU BEGIN:

1. Download and install the Body Furnace application at the Apple® App Store for your iOS device or the Google Play App Store for your Android device.
2. Put the Body Furnace into Bluetooth® mode by holding the control button for 5 seconds while the unit is powered off.
3. Open the Body Furnace App and follow the on-screen instructions to pair a new device or connect to an existing device.
4. Use the on-screen controls to adjust temperature and monitor battery levels.

USING THE BODY FURNACE ON-UNIT CONTROLS

To operate the Body Furnace without the use of Bluetooth® technology, use the control button located on the front of the Body Furnace unit. While the unit is off, press and hold the control button for 2 seconds until the blue light illuminates. Release the button and press again to cycle through 3 temperature modes.

Turning unit on/off

Off / no power ● ● ● ●

On / no heat ● ● ● ●

hold 2 seconds

Adjusting heat

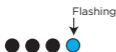
Low 100° F ○ ● ● ●

Med 120° F ● ○ ● ●

High 140° F ● ● ○ ●

Charging and Battery

0-20% Low battery



10-30% Life remaining



31-50% Life remaining



51-75% Life remaining



76-99% Life remaining



100% Life remaining



LITHIUM-ION POLYMER BATTERY INFORMATION.

The high quality Lithium-Ion Polymer batteries can be fully recharged well over 500 times. Only use the included Body Furnace charging devices to charge the batteries. Batteries must be disposed of in accord with local laws and regulations.

Charge Time:

The Body Furnace batteries are designed with Quick Charge technology and will fully charge in 4 hours or less.

Charging and recharging batteries

The Body Furnace must be fully charged before first use. Charge the batteries at room temperature. It may take up to 4 hours to charge all batteries simultaneously.

Directions

1. Plug the USB Cable into the included charging block.
2. Connect the wall charger to a power outlet or plug the USB connector into a powered USB port.
3. Lay device on flat surface with flame logo in upright position. Connect charge cord to port just below the flame logo. Allow to charge for 4-6 hours before use. Product is fully charged when LED lights up.
4. When charging is complete, disconnect the charger from the device, you are ready to begin device Bluetooth® pairing with your smart phone.

Run Time: Unit will run on high up to 3 hours, medium up to 5 hours, and low up to 6 hours.

CARING FOR THE BODY FURNACE

- Store the Body Furnace and accessories in a clean and dry place.
- Charge batteries fully before long-term storage. Recharge the batteries every few months to maintain peak performance.
- Do not damage the heating elements by excessively bending the Body Furnace unit.
- Clean with a damp cloth only. Do not use chemicals or cleaning agents.
- Do not submerge in water. Body Furnace has a water resistant coating, but cannot be submerged in water and is not waterproof. If the Body Furnace becomes submerged in water, air dry for 24 hours before attempting to use.
- Only air-dry the Body Furnace. Do not place it on a radiator or near any other hot surface. Let the Body Furnace dry completely before charging and attempting to use again.

For more tips and troubleshooting information, please visit body-furnace.com.

CAUTION: Be aware of burn possibilities. Properly use the Body Furnace according to instructions. Users of the Body Furnace need to be aware of early sensations of a burn, including when an area of skin becomes hot, or when any area of your skin feels like you are being pricked or pointed with a sharp object and may not feel hot. If you feel the early warning of a burn, immediately discontinue use of the Body Furnace and make certain your skin is not at risk of being burned. See a physician immediately if you think you have a burn.

CAUTION - Risk of fire and burns. Do not open, crush, heat above 185°F, or incinerate. Follow manufacturer's instructions.

CAUTION - Never put batteries in mouth. If swallowed, contact your physician or local poison control center.

CAUTION - This product should not be used in environments where there is a likelihood of it being punctured by sharp objects in pockets or near body. When the product is removed for charging if there is any indication that the battery or battery case has been punctured or damaged, it should not be used or recharged. Under no circumstances should a battery/insole that has been punctured or damaged be connected to the charger.

CAUTION - Not for use by children

CAUTION - Do not use during pregnancy or if you plan to become pregnant.

⚠WARNING: Lithium-ion Batteries and/or products that contain Lithium-ion Batteries can expose you to chemicals including cobalt lithium nickel oxide and nickel, which are known to the State of California to cause cancer and birth defects or other reproductive harm.

For more information, go to www.P65Warnings.ca.gov

Battery Specifications: 11.1V 2200 mAh 24.42 Wh

Please visit **<https://www.tsa.gov/travel/security-screening/whatcanibring/items/lithium-batteries-100-watt-hours-or-less-device>** for guidelines on how to safely transport Body Furnace during air travel.

Radiation Exposure Statement:

This device has been evaluated to meet general RF exposure requirement. The device can be used in portable exposure condition without restriction.

Limited Warranty: Brownmed warrants all products to be free of manufacturing defects. Each product is intended for use by a single patient.

Body Furnace Accessories

Accessories available for the Body Furnace include extra charging blocks, charge cables and the adjustable strap. Contact Brownmed at 1-877-853-5518 or visit www.brownmed.com for customer service contact information.

If you have further questions regarding the Body Furnace:

- Call Customer Service at 1-877-853-5518
- Refer to www.brownmed.com for instructions, tips and how-to videos.

Customer Service

✉ hello@body-furnace.com ☎ 1-877-853-5518

The Bluetooth® word mark and logos are registered trademarks owned by Bluetooth SIG, Inc. and any use of such marks by Brownmed Inc. is under license. Other trademarks and trade names are those of their respective owners.

RADIO AND TELEVISION INTERFERENCE

This equipment has been tested and found to comply with the limits for a Class B digital device, pursuant to Part 15 of the FCC rules. These limits are designed to provide reasonable protection against harmful interference in a residential installation. This equipment generates, uses and can radiate radio frequency energy and, if not installed and used in accordance with the instructions, may cause harmful interference to radio communications. However, there is no guarantee that interference will not occur in a particular installation. If this equipment does cause harmful interference to radio or television reception, which can be determined by turning the equipment off and on, the user is encouraged to try to correct the interference by one or more of the following measures:

- Reorient or relocate the receiving antenna.
- Increase the separation between the equipment and the receiver.
- Connect the equipment into an outlet on a circuit different from that to which the receiver is connected.
- Consult the dealer or an experienced radio/TV technician for help.

This device complies with Part 15 of the FCC Rules. Operation is subject to the following two conditions: (1) this device may not cause harmful interference, and (2) this device must accept any interference received, including interference that may cause undesired operation.

Changes and Modifications not expressly approved by Schawbel Technologies LLC can void your authority to operate this equipment under Federal Communications Commission's rules. This device complies with Industry Canada license-exempt RSS standard(s). Operation is subject to the following two conditions: (1) this device may not cause interference, and (2) this device must accept any interference, including interference that may cause undesired operation of the device.

Brownmed Inc.
101 Federal Street, 29th Floor, Boston, MA 02110
www.brownmed.com

